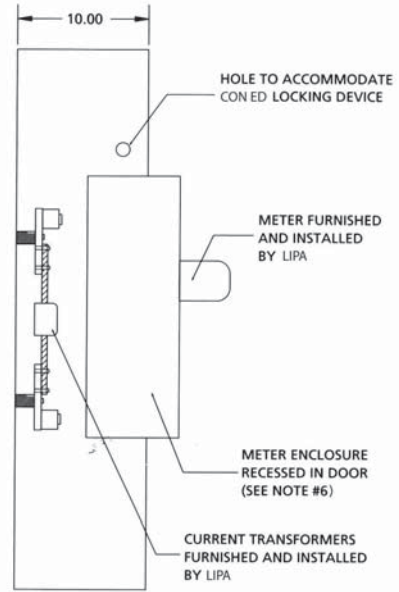
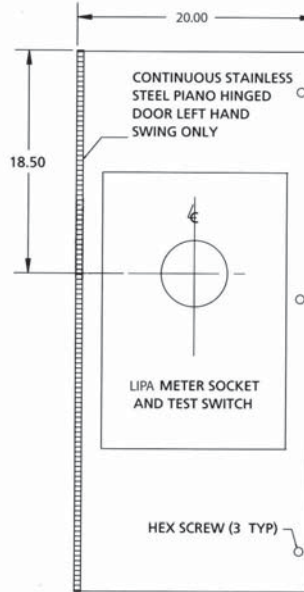
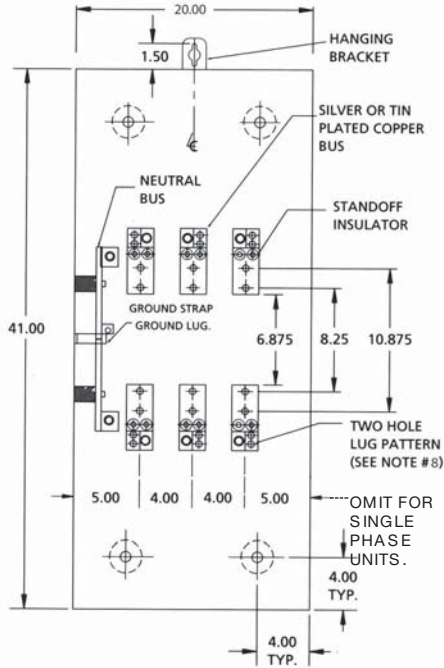


LIPA / KEYSpan EQUIPMENT

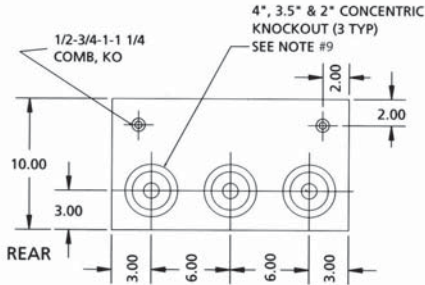


LIPA Spec.	Navtech Cat. No	Size Description	Amps	Volts	List Price
TRANS-S	TS-400-208(1)	41x20x10	400	240	\$1,540.00
TRANS-S	TS-400-208(3)	41x20x10	400	240	1,710.00
TRANS-S	TS-800-208(1)	48x24x10	800	240	1,880.00
TRANS-S	TS-800-208(3)	48x24x10	800	240	2,200.00
6J-7PTS	MS7PL	7 PT. METER SOCKET		30 AMP (CONT)	570.00
13J-10PTS	MS10PL	10 PT. METER SOCKET		30 AMP (CONT)	620.00
3" HUB	3" HUB				56.00
3 1/2" HUB	3 1/2" HUB				61.00
4" HUB	4" HUB				66.00
TS-TCP	TOP CLOSING PLATE				26.00

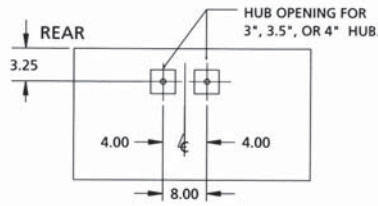
LIPA 400 AMP TRANS "S"
CURRENT TRANSFORMER CABINET (NEMA 3R)
200 AMP. & 400 AMP. 240V AC RATED
CATALOG NUMBER TS-400-208(1) TS-400-208(3)



SIDE VIEW



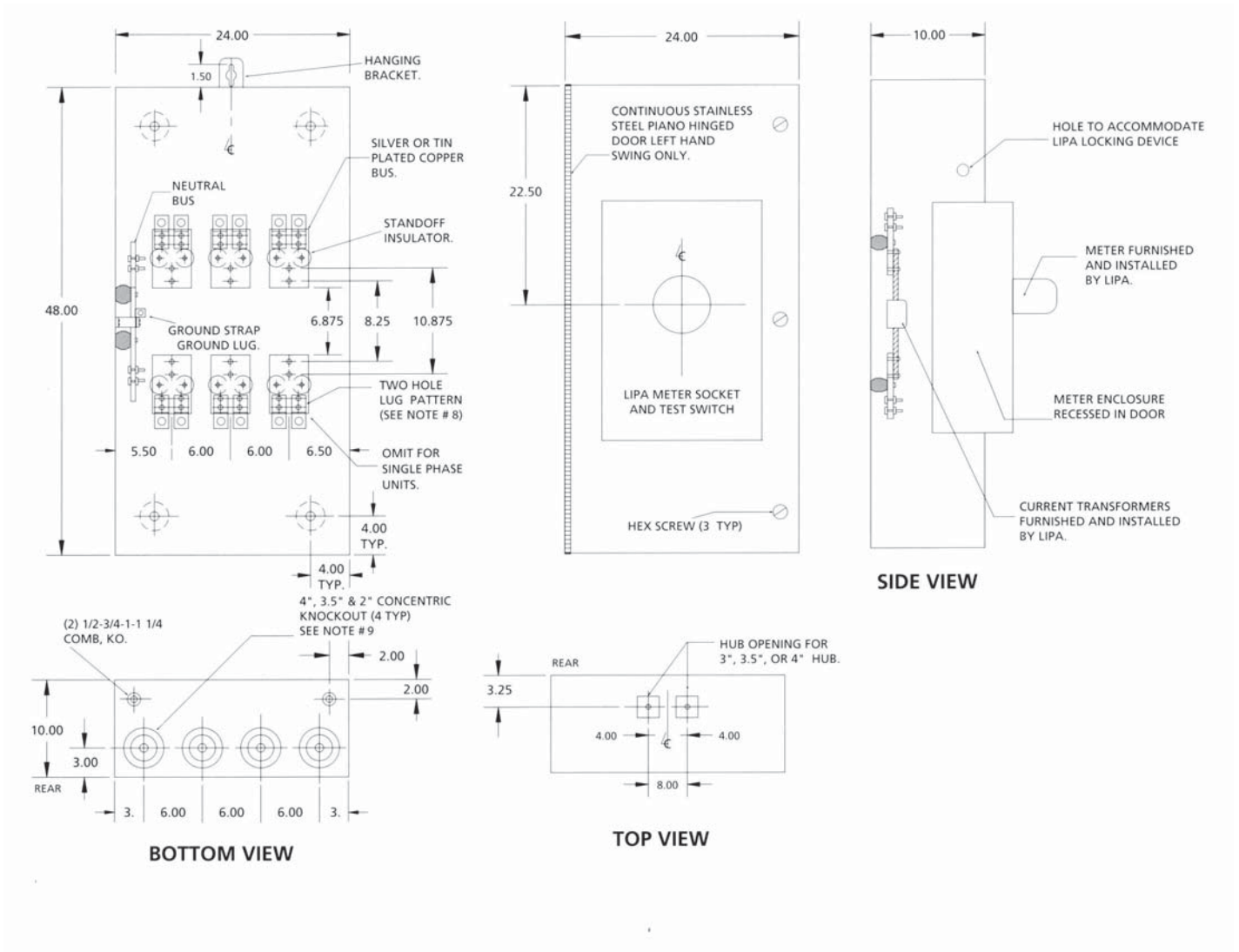
BOTTOM VIEW



TOP VIEW

- CABINET SHALL BE RATED NEMA 3R AND SHALL BE CONSTRUCTED FROM CODE GAUGE GALVANIZED OR GALVANNEALED STEEL.
- BUS BAR SHALL BE SILVER OR TIN PLATED AND SHALL BE SIZED PER THE NEC.
- BUS BAR SHALL BE MOUNTED IN THE CABINET BY MEANS OF STANDOFF INSULATORS OR INSULATED MOUNTING BRACKETS. INSULATING MATERIAL SHALL CONFORM TO THE APPLICABLE SECTIONS OF UL 746 AND UL 94. CABINET SHALL BE UL APPROVED.
- THE RIGHT HAND SIDE OF THE CABINET SHALL ALLOW FOR LINE AND LOAD CABLES TO ENTER AND EXIT THROUGH THEN TOP OR THE BOTTOM OF THE CABINET. THIS SPACE SHALL ALLOW FOR THE CABLES TO MEET THE MINIMUM BENDING RADIUS TO NEAREST PHASE OR NEUTRAL BUS AS PER THE NEC.
- THE SHORT CIRCUIT WITHSTAND CAPABILITY OF THE CABINET ASSEMBLY SHALL BE A MAXIMUM OF 50,000 RMS SYMMETRICAL AMPERES.
- CABINET DESIGN SHALL HAVE PROVISIONS FOR A SOLID DOOR TO ALLOW FOR THE METER ENCLOSURE TO BE MOUNTED REMOTELY FROM THE CABINET.
- MANUFACTURER SHALL FURNISH AND INSTALL 13 STUDS WITH SPLIT LOCK WASHERS AND HEX NUTS FOR CT MOUNTING.
- USE ONLY MANUFACTURER'S APPROVED LUG PROVIDED. EACH LUG IS RATED FOR (1) 600MCM-#4 OR (2) 250MCM-#4 CABLES:
- ONLY FACTORY PREFABRICATED KNOCKOUTS ON THE ENCLOSURE SHALL BE USED.**
- PROVIDE PREWIRED TRANS "S" UNIT IN ACCORD WITH LIPA CONSTRUCTION STANDARD: #8908A FOR SINGLE PHASE, 3 WIRE FORM 4S, OR CONSTRUCTION STANDARD #8509A FOR 3 PHASE, 4 WIRE WYE FORM 9S METER SOCKET.

LIPA 800 AMP TRANS "S"
CURRENT TRANSFORMER CABINET (NEMA 3R)
400 AMP. 600 AMP. & 800 AMP., 240 V
CATALOG NUMBER TS-800-208(1) TS-800-208(3)

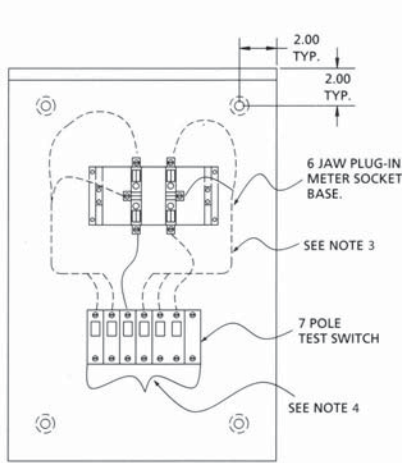


- CABINET SHALL BE RATED NEMA 3R AND SHALL BE CONSTRUCTED FROM CODE GAUGE GALVANIZED OR GALVANNEALED STEEL.
- BUS BAR SHALL BE SILVER OR TIN PLATED AND SHALL BE SIZED PER THE NEC.
- BUS BAR SHALL BE MOUNTED IN THE CABINET BY MEANS OF STANDOFF INSULATORS OR INSULATED MOUNTING BRACKETS. INSULATING MATERIAL SHALL CONFORM TO THE APPLICABLE SECTIONS OF UL 746 AND UL 94. CABINET SHALL BE UL APPROVED.
- THE RIGHT HAND SIDE OF THE CABINET SHALL ALLOW FOR LINE AND LOAD CABLES TO ENTER AND EXIT THROUGH THE BOTTOM OF THE CABINET. THIS SPACE SHALL ALLOW FOR THE CABLES TO MEET THE MINIMUM BENDING RADIUS TO NEAREST PHASE OR NEUTRAL BUS AS PER THE NEC.
- THE SHORT CIRCUIT WITHSTAND CAPABILITY OF THE CABINET ASSEMBLY SHALL BE A MAXIMUM OF 50,000 RMS SYMMETRICAL AMPERES.
- CABINET DESIGN SHALL HAVE PROVISIONS FOR A SOLID DOOR TO ALLOW FOR THE METER ENCLOSURE TO BE MOUNTED REMOTELY FROM THE CABINET.
- MANUFACTURER SHALL FURNISH AND INSTALL 1/2-13 STUDS WITH SPLIT LOCK WASHERS AND HEX NUTS FOR CT MOUNTING.
- USE ONLY MANUFACTURER'S APPROVED LUG PROVIDED. 2 LUGS/PER TERMINAL, EACH RATED FOR (1) 600 MCM-#4 OR (2) 250 MCM-#4 CABLE.
- ONLY FACTORY PREFABRICATED KNOCKOUTS ON THE ENCLOSURE SHALL BE USED.**
- PROVIDE PREWIRED TRANS "S" UNIT IN ACCORD WITH LIPA CONSTRUCTION STANDARD: #8908A FOR SINGLE PHASE, 3 WIRE FORM 4S, OR CONSTRUCTION STANDARD #8509A FOR 3 PHASE, 4 WIRE WYE FORM 9S METER SOCKET.

**LIPA METER SOCKET AND TEST SWITCH
(1 AND 3 PHASE)
30 AMP. CONT., 240V AC RATED (NEMA 3R)**

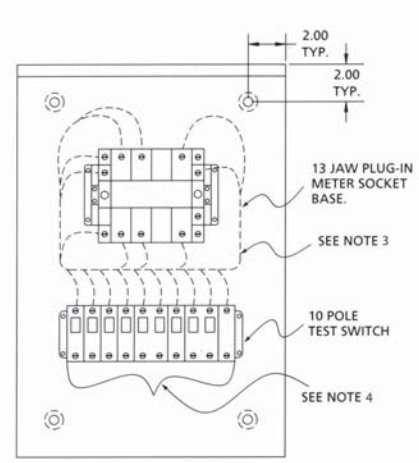


SINGLE PHASE



**FRONT VIEW NO COVER
MS 7P - LIPA**

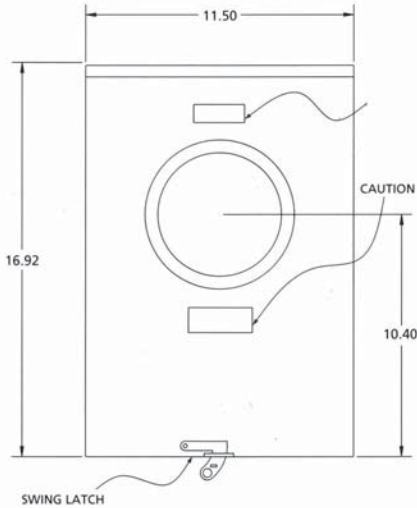
THREE PHASE



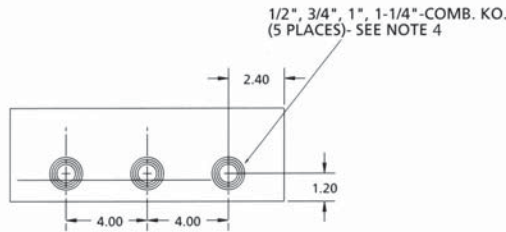
**FRONT VIEW NO COVER
MS 10P - LIPA**



SIDE VIEW



TYPICAL FRONT VIEW



TYPICAL BOTTOM VIEW

**CATALOG NUMBERS
MS10P-LIPA
MS7P-LIPA**



1. CABINET SHALL BE RATED NEMA 3R AND SHALL BE CONSTRUCTED FROM CODE GAUGE GALVANIZED OR GALVANNEALED STEEL.
2. **ONLY FACTORY PREFABRICATED KNOCKOUTS ON THE ENCLOSURE SHALL BE USED.**
3. STANDARD #8909A FOR 1 PHASE 3 WIRE 3 WIRE FORM 45 METER SOCKET, AND STANDARD #8509A FOR 3 PHASE 4 WIRE WYE FORM 9S METER SOCKET, IS PROVIDED PREWIRED FROM TEST SWITCH TO METER BASE IN ACCORD WITH LIPA CONSTRUCTION.
4. WIRE PROVIDED AND INSTALLED BY CONTRACTOR.