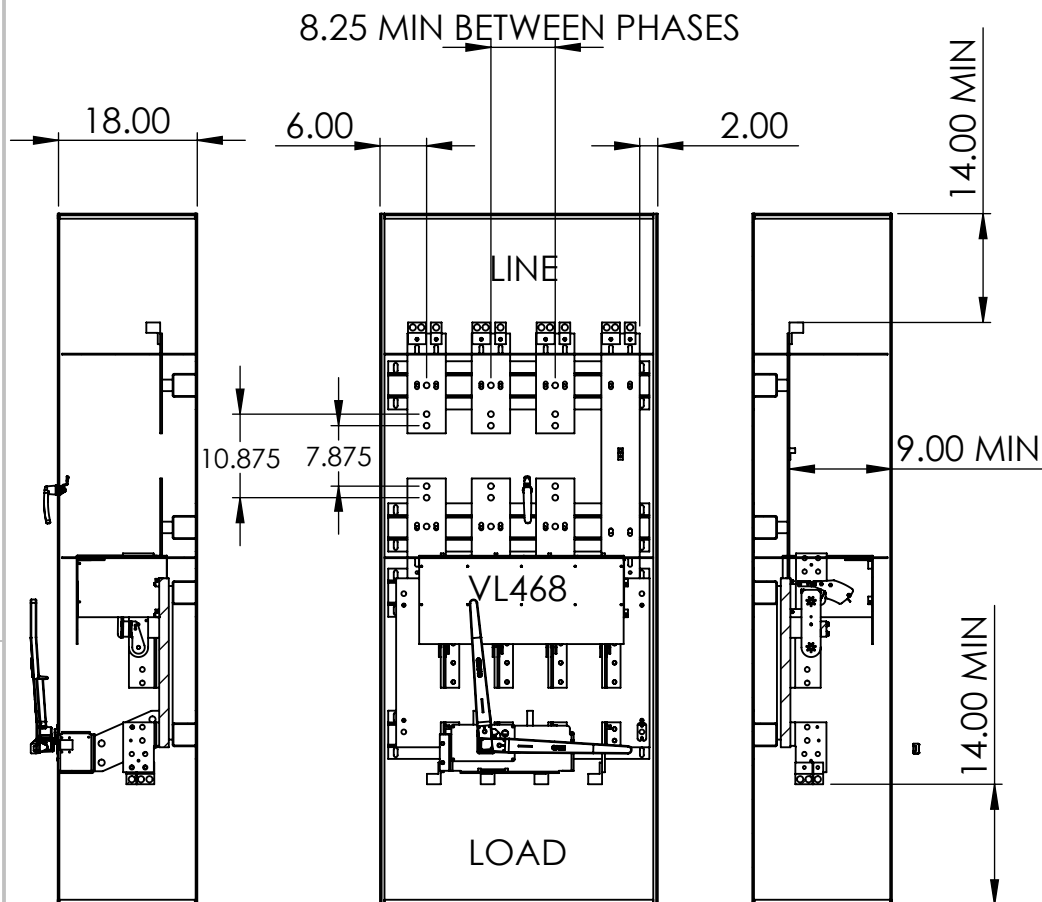


B

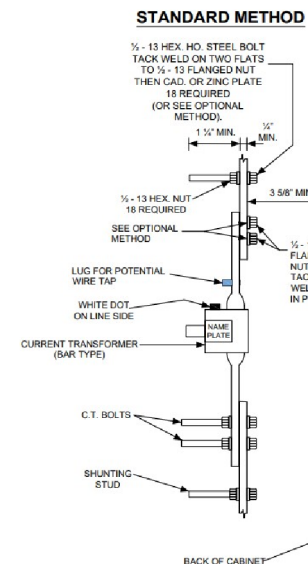


PHASE SIDE VIEW

OPEN FRONT VIEW

NEUTRAL SIDE VIEW

COVERED FRONT VIEW

OPTIONAL VIEWING
WINDOW FOR SWITCH
CONTACTSPADLOCKABLE
CT COMPARTMENT

NOTES:

1. NEMA 1 CONSTRUCTION
2. BUS BARS - COPPER 98% CONDUCTIVITY
3. ENCLOSURE WILL DISPLAY MANUFACTURERS NAME
4. ALL NUTS, BOLTS AND WASHERS MUST BE 1/2-13 ZINC COATED GRADE 5 STEEL
5. MAX WIRE SIZE LINE AND LOAD SIDE:
(3)600 MCM LEADS
6. FRONT DOOR IS OUTFITTED WITH SEALABLE SCREWS & PADLOCKABLE PROVISIONS
7. PERFORATED VENTING ON TOP AND BOTTOM COVERS
8. VIEWING WINDOW FOR SWITCHGEAR COMPARTMENT
9. DESIGNED FOR BOTTOM ENTRY AND TOP EXIT ONLY
10. RATED FOR 1200A, 250V MAX, 200K AIC

	NAME	DATE
DRAWN BY	J. Pincus	7/1/2024
APPROVED BY		

PROPRIETARY AND CONFIDENTIAL
THE INFORMATION CONTAINED IN THIS DRAWING IS THE SOLE PROPERTY OF Nav-Tech Inc. ANY REPRODUCTION IN PART OR AS A WHOLE WITHOUT THE WRITTEN PERMISSION OF Nav-Tech Inc. IS PROHIBITED.



155 MARCUS BLVD
HAUPPAUGE, NEW YORK 11788
PH: (718) 257-2111 FAX: (718) 257-2626

UNLESS OTHERWISE SPECIFIED:
ALL DIMENSIONS ARE NOMINAL UNLESS EXPLICITLY STATED OTHERWISE

MAT'L:	N/A
FINISH:	N/A
WEIGHT:	N/A

UNLESS OTHERWISE SPECIFIED

1. REMOVE ALL BURRS AND BREAK ALL SHARP EDGES .015 X 45° OR .015R
2. DIMENSIONAL LIMITS APPLY AFTER PLATING
3. 125/ MACHINED SURFACES EXCEPT AS NOTED

DRAWING TITLE: 298CT-1200 AMP COMBO

PART #: NAV-298CTSW-12T

DESCRIPTION:
1200 AMP 298 CT WITH TOP FED 1200A
BOLTED PRESSURE SWITCH
POWDER COATED GALV STEEL CONSTRUCTION
SILVER PLATED COPPER BUS BARS

**DO NOT SCALE
DRAWING**

SCALE 1:10

SIZE A

SHEET 1 OF 1

REV. 2

B

A

2

1