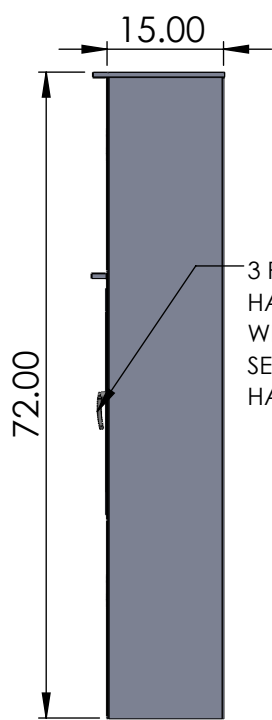


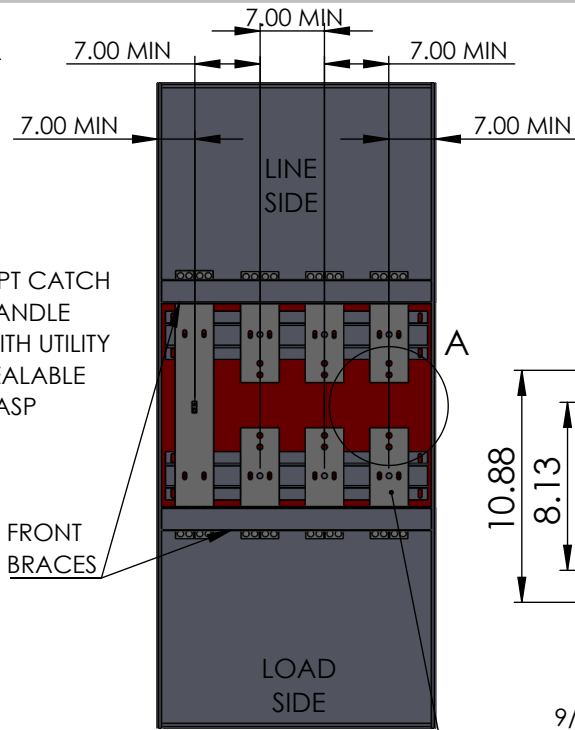
B



COVERED FRONT VIEW



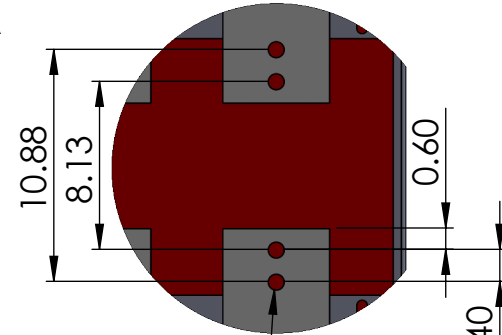
COVERED SIDE VIEW



OPEN FRONT VIEW

(1) 1/4" X 5" CU BUS

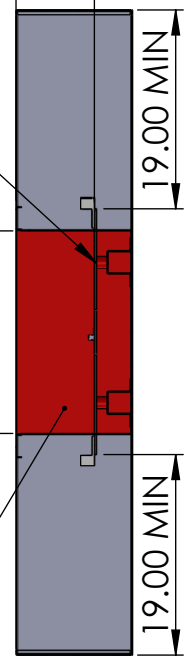
A



9/16" CT
MOUNTING
HOLE WITH
1/2"-13 STEEL
PRESS-FIT NUTS
AND BOLTS

UL 746 APPROVED
BUS INSULATOR
STANDOFFS

25.00 MIN
CT COMPARTMENT



SECTIONED SIDE VIEW

INSULATING GLASTIC PANEL
INSERTS ON TOP, BOTTOM,
SIDES AND REAR OF CT
SECTION ISOLATING THE
COMPARTMENT. CONSTRUCTED
IN CONFORMANCE WITH UL 891

B

NOTES:

- NEMA 3R CONSTRUCTION INCLUDES SEAM WELDED BODY, GASKETED COVER AND DOORS ALONG WITH SHED ROOF OVER CT COMPARTMENT
- FINISH: POWDERCOAT GRAY ENAMEL.
- DOOR SWING SHALL BE GREATER THAN 90° AND BE EQUIPPED WITH PROVISIONS FOR HOLDING THE DOOR OPEN.
- LINE, LOAD AND CT COMPARTMENT COVERS SHALL HAVE PROVISIONS FOR UTILITY COMPANY SEALS.
- LINE AND LOAD LUGS TO BE MECHANICAL, QUANTITY AND SIZE TO BE DETERMINED BEFORE RELEASED FOR MANUFACTURING, LINE (4) 500 MCM PER Ø & NEUTRAL, LOAD (4) 500 MCM PER Ø & NEUTRAL - IS STANDARD.
- LINE AND LOAD SIDES OF THE CABINET SHALL BE CLEARLY AND PERMANENTLY MARKED BY NAVTECH - TOP FEED IS STANDARD.
- PHASE & NEUTRAL BUS HAS 1/4" - 20 TAPPED HOLE IN CT COMPARTMENT FOR CT CONNECTION.
- ALL CT COMPARTMENT NUTS, BOLTS AND BELLEVILLE WASHERS SHALL BE GALVANIZED PER PSEG SPEC.
- CT BOLTING TORQUE VALUES SHALL BE AFFIXED WITHIN CT COMPARTMENT - 1/2"-13: 40 FT-LB.
- PADMOUNT STANDARD, EXTERNAL WALL MOUNT TABS AVAILABLE BY REQUEST.
- BUS BARS - SILVER PLATED COPPER 98% CONDUCTIVITY.

	NAME	DATE
DRAWN BY	N. BOSETTI	12/18/2024
APPROVED BY		

PROPRIETARY AND CONFIDENTIAL
THE INFORMATION CONTAINED IN THIS DRAWING IS THE SOLE PROPERTY OF Nav-Tech Inc. ANY REPRODUCTION IN PART OR AS A WHOLE WITHOUT THE WRITTEN PERMISSION OF Nav-Tech Inc. IS PROHIBITED.

NAV-TECH
INCORPORATED

155 MARCUS BLVD
HAUPPAUGE, NEW YORK 11788
PH: (718) 257-2111 FAX: (718) 257-2626

UNLESS OTHERWISE SPECIFIED:
ALL DIMENSIONS ARE NOMINAL UNLESS EXPLICITLY CALLED OUT OTHERWISE

MAT'L: 12 GA GALV
FINISH: POWDER COAT ANSI 61 GY
WEIGHT: N/A

UNLESS OTHERWISE SPECIFIED
1. REMOVE ALL BURRS AND BREAK ALL SHARP EDGES .015 X 45° OR .015R

2. DIMENSIONAL LIMITS APPLY AFTER PLATING

3. 125/ MACHINED SURFACES EXCEPT AS NOTED

DRAWING TITLE:
OUTDOOR 1200 AMP CT CABINET PSEG

PART #:
NAV-PG-CTR-12

DESCRIPTION:
1200 AMP CT CABINET FOR PSEG LONG ISLAND
NEMA 3R CONSTRUCTION
RATINGS: 1200A 600V 200K AIC MAX
LINE ENTRY TOP SIDE ; LOAD ENTRY BOTTOM SIDE

DO NOT SCALE DRAWING SCALE 1:25 SIZE A SHEET 1 OF 1 REV. 4

A

2

1