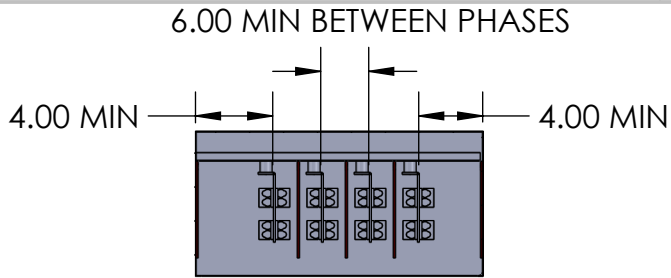


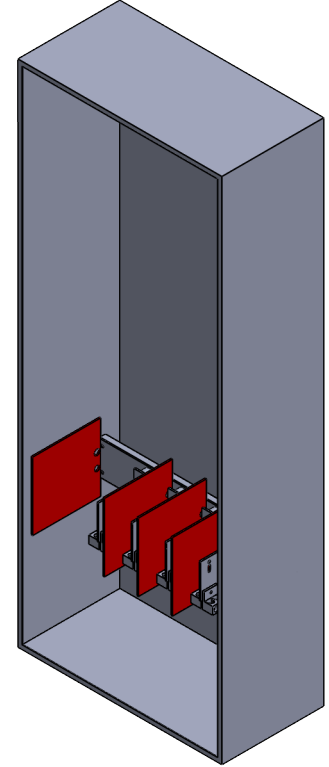
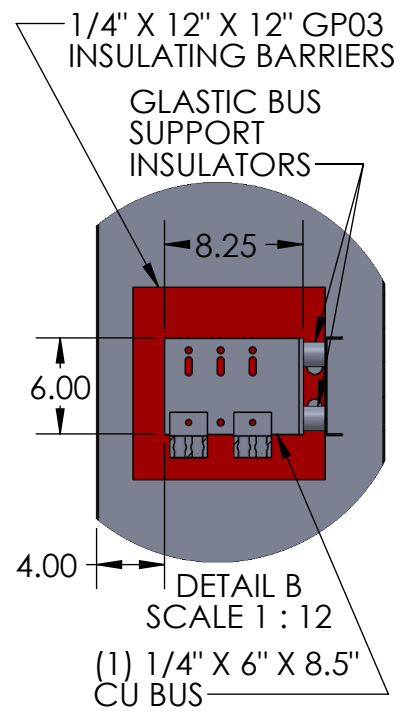
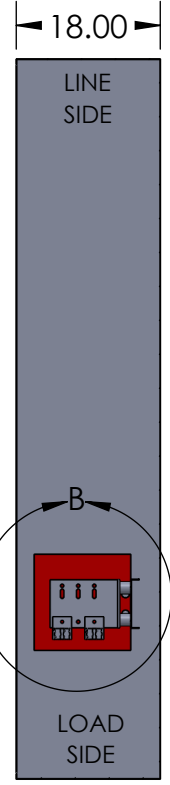
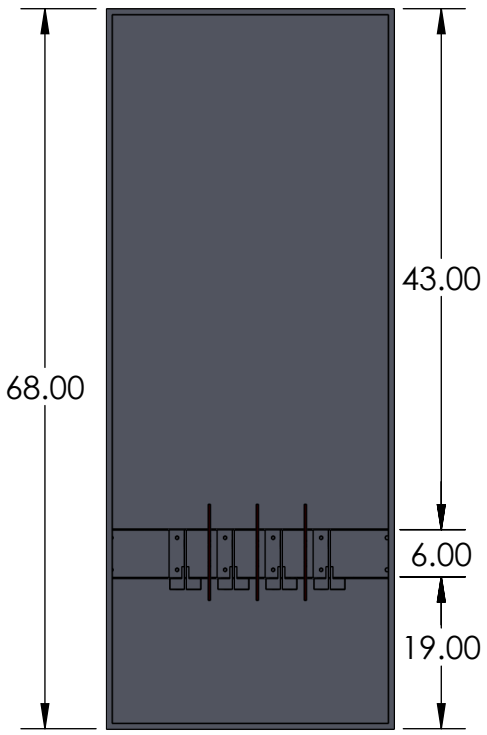
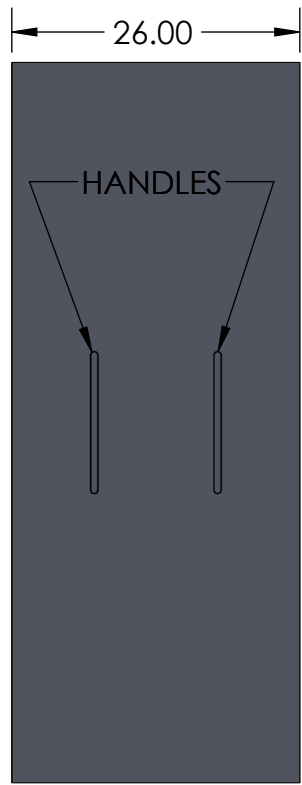
2

1



- NOTES:
1. BOX AND COVER CONSTRUCTION- GALV STEEL (12GA)
FINISH: POWDER COAT GRAY ENAMEL
 2. BUS BARS- COPPER 98% CONDUCTIVITY
 3. BOX SHALL HAVE NAME PLATE WITH MANUFACTURER'S NAME
 4. FRONT COVER SHALL BE SEALABLE WITH (2) HANDLES
 5. LINE SIDE: PROVISIONS FOR (2) 600 MCM
 6. LOAD SIDE: MOUNT UP TO (5) 600 MCM
 7. NEMA 1 CONSTRUCTION: STITCH WELDED ENCLOSURE
 8. "120/208v BLACK LABEL WITH WHITE LETTERING LOCATION ON INSIDE AND OUTSIDE OF THE ENCLOSURE
 9. SHORT CIRCUIT CURRENT RATING 200,000 SYM RMS AMPS

B



B

A

			MATL: 12 GA GALV FINISH: ANSI 61 GREY POWDER COAT WEIGHT:	DRAWING TITLE: EO-68-N1 CUT SHEET PART #: NAV-EO-68-9072B	
DRAWN BY: N. BOSETTI DATE: 11/14/2024 APPROVED BY:	NAME: N. BOSETTI DATE: 11/14/2024	155 MARCUS BLVD HAUPPAUGE, NEW YORK 11788 PH: (718) 257-2111 FAX: (718) 257-2626	UNLESS OTHERWISE SPECIFIED: 1. REMOVE ALL BURRS AND BREAK ALL SHARP EDGES .015 X 45° OR .015R 2. DIMENSIONAL LIMITS APPLY AFTER PLATING 3. ∇ 125/ MACHINED SURFACES EXCEPT AS NOTED	DESCRIPTION: NEMA 1 SERVICE ENTRANCE BOX UP TO 2 SETS LINE SIDE SPECIFIED TO CON ED EO-9072-B	
PROPRIETARY AND CONFIDENTIAL THE INFORMATION CONTAINED IN THIS DRAWING IS THE SOLE PROPERTY OF Nav-Tech Inc. ANY REPRODUCTION IN PART OR AS A WHOLE WITHOUT THE WRITTEN PERMISSION OF Nav-Tech Inc. IS PROHIBITED.			UNLESS OTHERWISE SPECIFIED: ALL DIMENSIONS ARE NOMINAL UNLESS EXPLICITLY SPECIFIED OTHERWISE	DO NOT SCALE DRAWING	
		SCALE: 1:24	SIZE: A	SHEET: 1 OF 1	REV: 6

A

2

1